

## RL Interior Design

RL Interior Design provides interior design, space planning and furniture, fixtures and equipment specification and procurement services for new and renovated work and learning, residential and exhibit environments.

Our completed project history includes office workspace for very large and small organizations, training, classroom, lab, conference, visitor and tech centers, retail showrooms and museum exhibits, theaters and auditoriums, historic renovations and a wide variety of new and renovated residential interiors.

An excellent project begins with careful and purposeful understanding that is targeted at identifying a client's visual and spatial design intent, patterns of use, spatial activities, and first and life cycle cost, schedule, sustainability and maintainability objectives. The value, clarity, and power of the experience of a visual environment has a tremendous impact on the quality of our lives. The controlled experience of interior space inherently communicates intent. Interior design that is skillful and concise can actively facilitate our achievement of personal, organizational and business goals.

We have active expert knowledge, discipline and practiced skill:

- Using artificial and natural light - lighting is the most important factor in interior design
- Understanding how and what we hear in spaces for sound control, absorption and isolation
- Designing for inherent spatial orientation and wayfinding
- Providing outside awareness throughout an interior space
- Applying an experienced artist's knowledge of color
- Establishing coherent spatial relationships between different functions and groups
- Balancing the privacy of enclosure with the openness of participation
- Forming space and using materials efficiently
- Matching how people use their time with what spatial options are available to them
- Planning for easy change of use, reorganization, reconfiguration expansion and contraction
- Giving spatial identity to individuals, families, teams and groups
- Integrating complex communication and display technology for unobtrusive and natural use
- Adapting mechanical air heating and cooling systems for comfort and control
- Minimizing the cost and trouble of maintaining surfaces, fixtures and materials
- Working at an industrial engineering level with known and emerging finishes and materials
- Understanding the value and original intentions for historically significant restoration and renovation
- Helping people and furniture work safely and well together
- Knowing the complete international business of furniture and finishes

We can combine our knowledge of interior design with work and learning environment planning and industrial design. This integration can provide comprehensive and fresh thinking that can lead to new and more memorable, meaningful and efficient experiences of our environment.



## RL Interior Design

2004	<b>WGBH Public Television &amp; Radio New Headquarters Project</b> Brighton, Massachusetts
2003	<b>The American University in Cairo Furniture Design</b> Cairo, Egypt
	<b>Kuwait National Petroleum Company</b> Kuwait City, Kuwait
2001	<b>Fremantle Residence</b> Madison, Connecticut
	<b>Urban Archaeology</b> Boston, Massachusetts
	<b>United States Department of Justice</b> Northeastern United States
	<b>WGBH Public Television &amp; Radio, Lobby Renovation</b> Boston, Massachusetts
	<b>The Harvard Film Archive, Harvard University</b> Cambridge, Massachusetts
	<b>Cap Gemini Ernst &amp; Young, Center for Business Innovation</b> Cambridge, Massachusetts
2000	<b>IdeaScope</b> Boston, Massachusetts
	<b>Function Sports</b> Cambridge, Massachusetts
	<b>Fidelity Investments Wall Street Investor Center</b> New York, New York
	<b>Bank of America</b> San Francisco, California
1999	<b>Fidelity Investments Equity Trading Floor</b> Boston, Massachusetts
1998	<b>Vista Travel</b> Cambridge, Massachusetts
	<b>GTE Internetworking / Powered by BBN</b> Burlington, Massachusetts
	<b>Fidelity Investments Center for Applied Technology (FCAT)</b> Boston, Massachusetts
	<b>The Boston Consulting Group</b> Boston, Massachusetts
1997	<b>Travel Collaborative</b> Somerville, Massachusetts
	<b>Fidelity Investments FMRCo. World Headquarters</b> Boston, Massachusetts
	<b>Fidelity Investments Chart Room</b> Boston, Massachusetts
1996	<b>Lightolier Tech Center</b> Fall River, Massachusetts
1995	<b>Fitch Incorporated</b> Boston, Massachusetts
1993	<b>Guilford Design Studios</b> Guilford, Maine
1994	<b>Robert Luchetti Associates Offices</b> Cambridge, Massachusetts
1989	<b>Earthwatch Assembly Hall and Library</b> Watertown, Massachusetts
1987	<b>General Cinema</b> Prototypes throughout the United States

Wgbh Public Television and Radio  
Lobby Renovation  
Boston, Massachusetts 2001



A flexible lobby exhibit that is easily updated to acknowledge an ever-growing roster of benefactors and broadcast awards

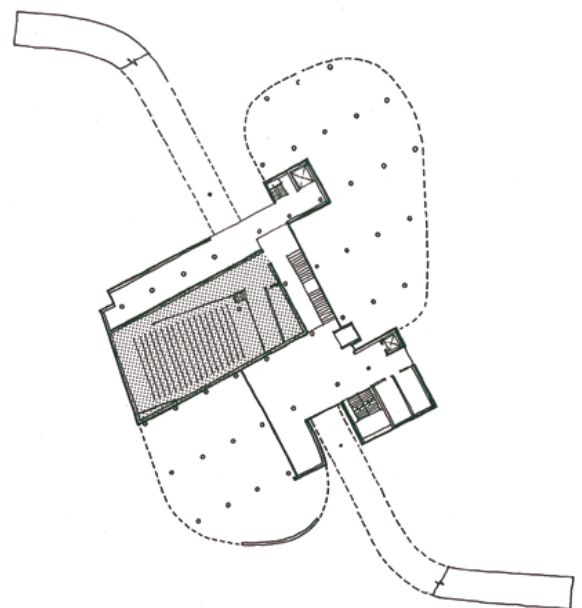
WGBH, a major international public broadcasting network, recently completed this renovation of their main entrance lobby. The purpose of the project was to provide a low cost renovation of the finishes, furniture and lighting systems in the space and to set up a new means, that could be easily updated, of acknowledging their ever growing roster of major benefactors and broadcast awards. These elements are digitally printed on removable backlit Mylar and fabric panels, which are stretched over horizontal support bars.





## Renovations to Harvard's historically significant visual arts center

This renovation addressed AV facilities, acoustics, lighting and furnishings for a series of spaces in this architecturally and historically significant Visual Arts Center adjacent to Harvard Yard. Designed by Le Corbusier, it was his sole built project in North America. A new auditorium projection room, renovated auditorium, library space and a student video/CD ROM viewing gallery were designed for the Carpenter Center, while a film conservation unit was planned for an off site location.



Main floor plan





## Light fixtures, bath accessories, and a vast collection of stone and tile displayed in a variety of systems

Urban Archaeology is a company committed to saving historic American architectural elements from destruction and extinction. The growing demand for high-quality replica and original items with this same attention to detail and fine craftsmanship has inspired Urban Archaeology to develop a line of lighting fixtures, bath accessories, washstands, medicine cabinets and a vast collection of stone and handcrafted tile from around the world, all of which are displayed in a variety of re-configurable floor, wall and ceiling mounted display systems and in-situ vignettes.



## A high density team based office workspace plan with shared access to exterior light and views

The WGBH Educational Foundation is moving to a new 285,000 sf headquarters site. We have been commissioned to create the strategy for and space plan the 208,500 sf of office workspace in the project for approximately 1,000 staff. The new facility is made up of three disparate and connected buildings which has been planned at a very high density with a ratio of 75% enclosed and 25% open plan offices, none of which abut directly on to an outside window, thereby providing an equitable distribution of and more shared light and views for all of the buildings inhabitants.

### Open Office



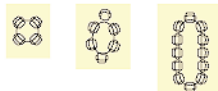
24 48 84

### Closed Office



80 120 180

### Open Conference



80 120 216

### Closed Conference



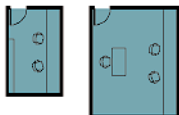
80 120 216

### Open Lounge



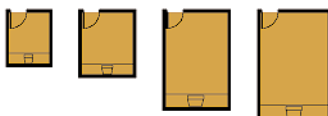
80 120 216

### Edit Suite



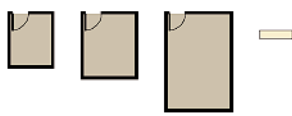
160 326

### Screening



80 120 216 260

### Storage



80 120 216 hallway

### Misc - closed



30 64 30 80 30







## Fidelity Investment's flagship Wall Street prototype

Fidelity Investments required a modular system of interactive kiosks to be deployed at retail investment centers in major metropolitan areas for walk-in customers. The kiosk is designed as a stand-alone object that can be grouped into a series of aggregate forms for different functions: a self-service Trading station, a phone booth and a larger scale "Discovery" station. Each kiosk can house a computer, printer, telephone, keyboard/mouse and a large flat panel display.





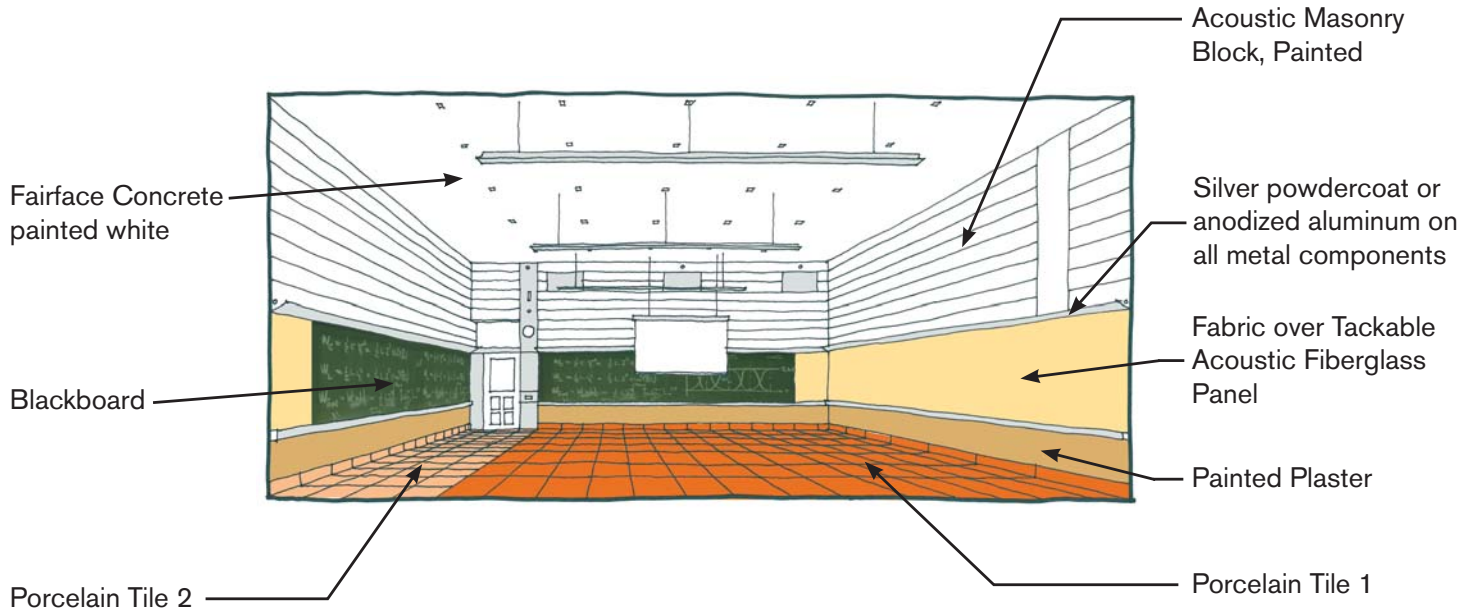


Custom kiosks for walk-in customer phone calls, online trading and research



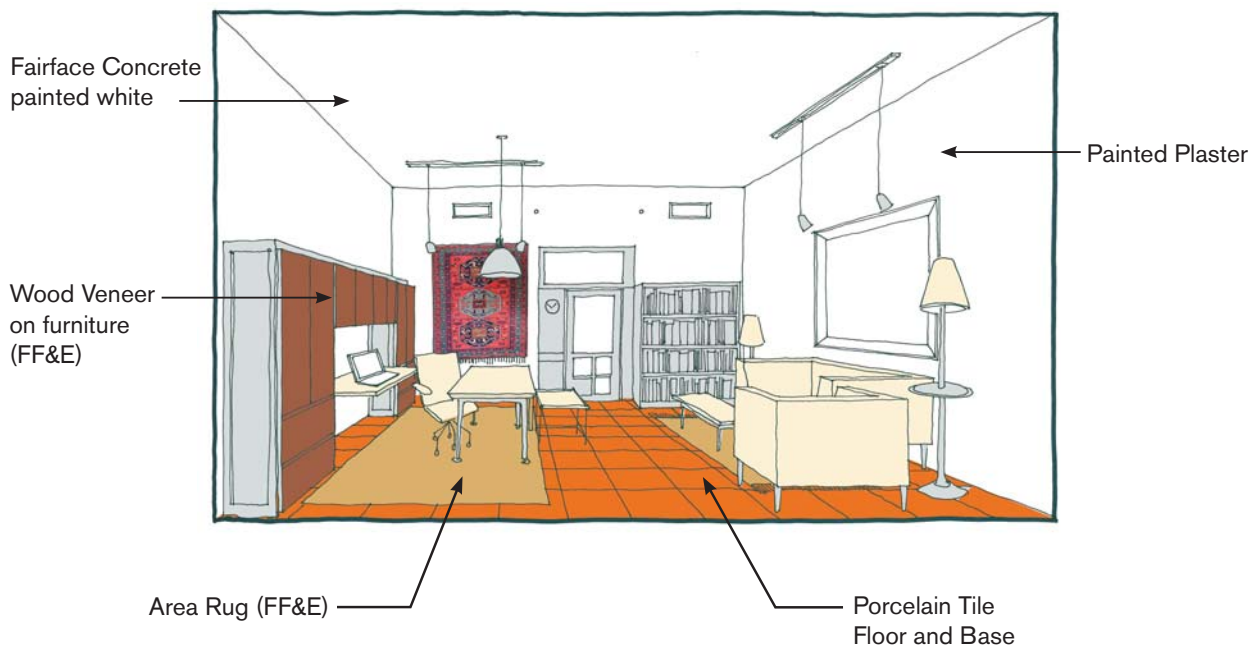
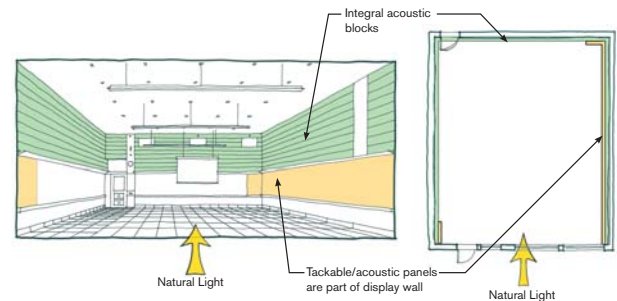
## American University in Cairo

Cairo, Egypt 2002- current



## Design Guidelines to Optimize Aesthetics and Function

Design Principles were developed for the University's spaces most important for the functioning of the University: classrooms, computer labs and offices. The design avoids solutions that are inescapable in the West (lay-in acoustical ceilings, e.g.) and takes advantage of local climate conditions (high exposed concrete ceilings, natural local materials, operable windows). The holistic approach integrates acoustical and mechanical solutions, natural and electric lighting, flexible power distribution, custom furniture and display wall elements.







## National AIA Interior Design Award for an historic mill building loft renovation

The Guilford of Maine Design Studio/Showroom functions as the primary design facility and showcase for a leading producer of fabrics for the contract and residential furniture industries. Track-mounted display and storage elements can be rearranged to provide a variety of spatial configurations. The American Institute of Architects recognized the design with a National Interiors Honor Award.

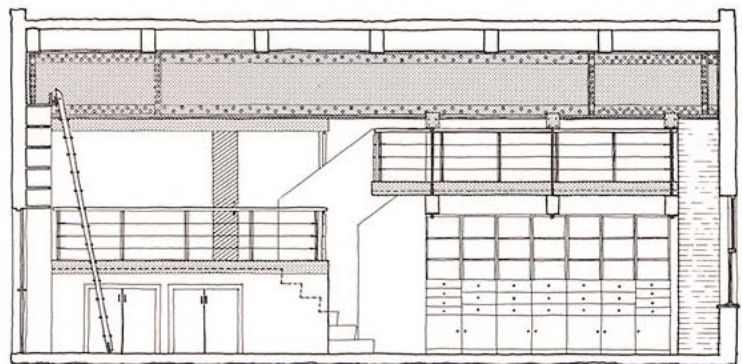


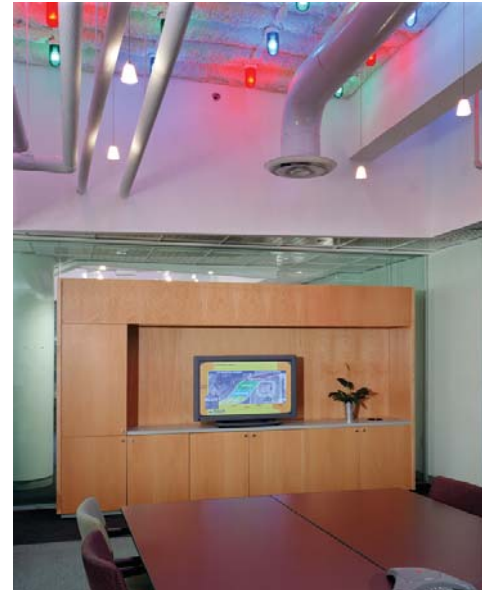




### Our own studio and office, open and closed multi-setting work areas

The office is a spacious design housed in the former boiler room of a 19th century factory building. An enormous steel girder and exposed wood beams give character to the original space and the 18-foot ceiling unites different levels of the office. A mezzanine, hung from steel cables, was added to expand the space. New staircases made of steel and wood join different levels and are painted bright red. The open industrial setting is accentuated by custom designed contemporary furniture, steel cable handrails and stainless steel flooring and stair treads.





## Transformable meeting spaces with large format interactive displays and controllable multi-color light

CGE&Y wanted to convert generic office space into a high-tech international center for collaborative work and education. To transform standard meeting rooms into state of the art conference and training rooms, new AV equipment and superior acoustic materials were introduced. Dramatic perforated ceiling tiles, open ceilings and programmable multi scene lighting were used to create a more dynamic changeable environment to support new interactive programs.





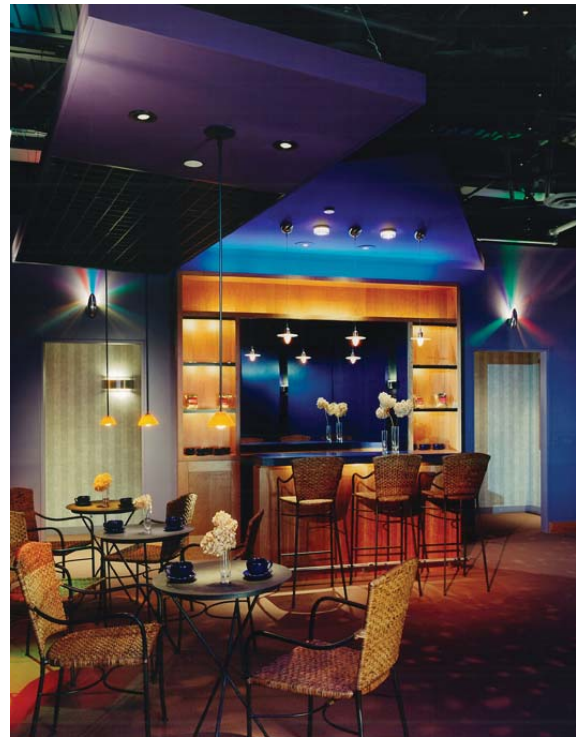


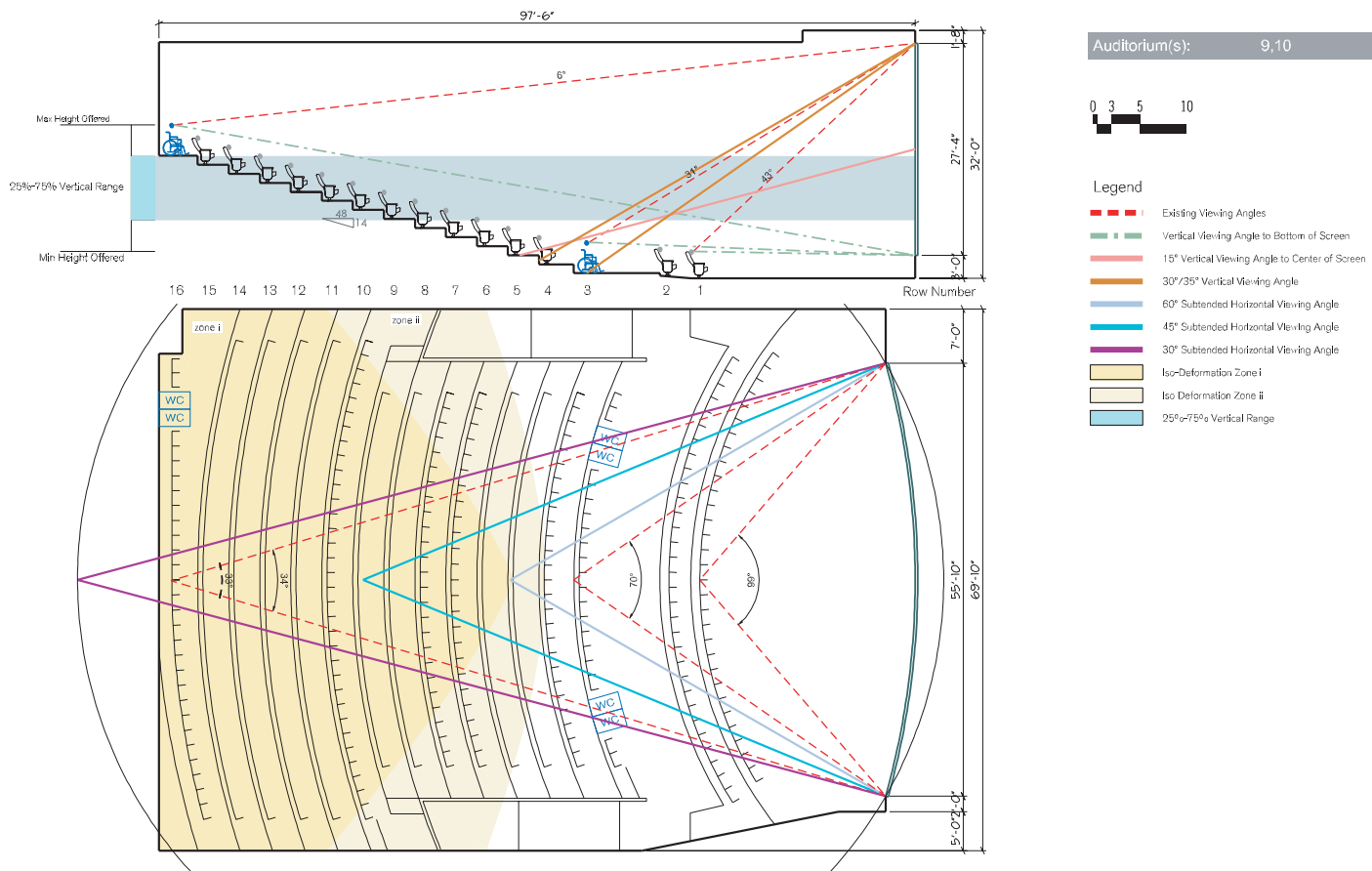
## A tech center that functions as a showroom and educational facility for an extensive catalogue of light fixtures and controls

The Tech Center functions simultaneously as a showroom and educational facility for Lightolier's extensive catalogue of light fixtures and controls. It is a complex exhibit system offering variable opportunities to transform the space for different lighting effects. Discrete and identifiable architectural elements such as floating ceiling planes and a central rotunda serve as a backdrop for the various product lines and application vignettes.



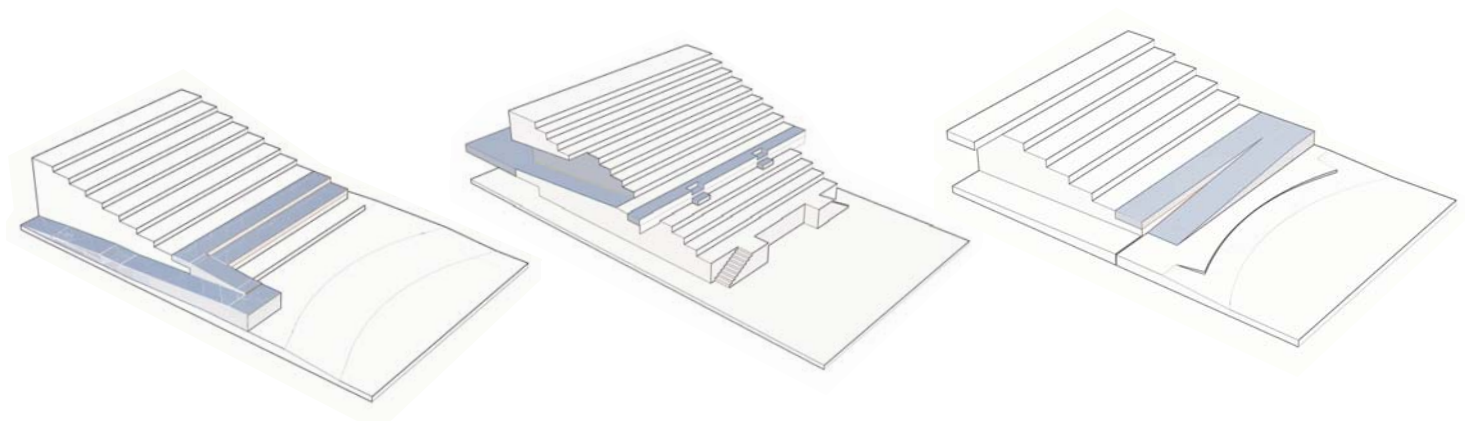
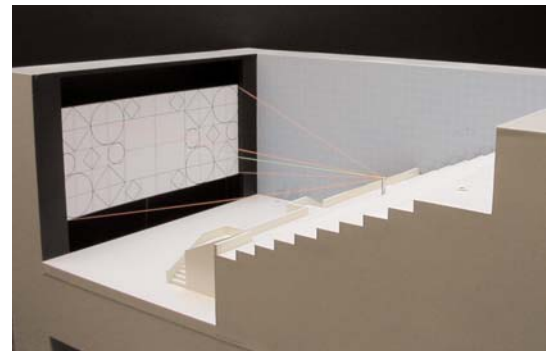






## Comparable lines-of-sight for the disabled

The Department of Justice wanted to require major commercial cinemas to provide people in wheelchairs with adequate lines of sight comparable to other moviegoers. Robert Luchetti Associates prepared documentation, including models and technical studies, to compare the lines of sight at different locations in the assembly halls. This expertise was also translated into solutions for how to redesign the spaces to accommodate all viewers.

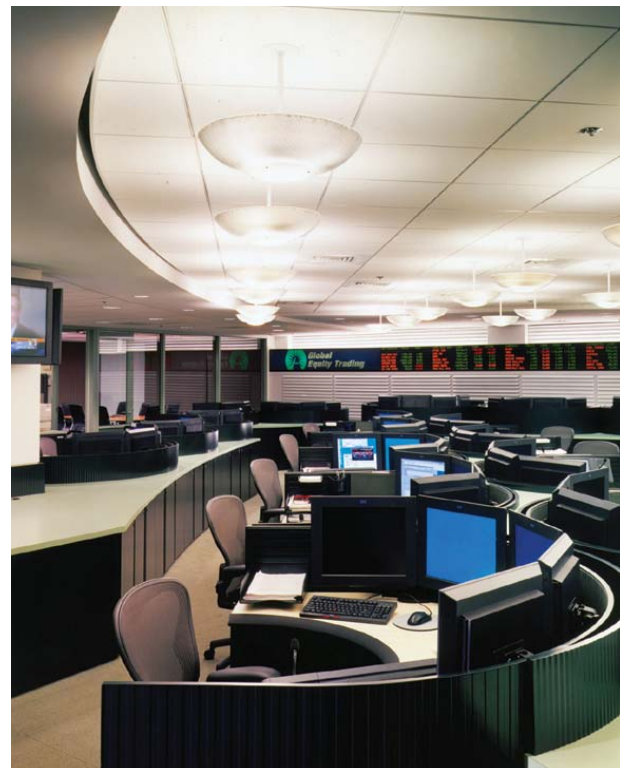






## New equity trading floor with custom trading desks to accommodate new technology

The new Trading Floor was configured to establish better sight-line relationships between teams of Traders. A custom trading desk was developed to accommodate new flat screen technology. To overcome the ceiling height constraints of its 31st floor highrise location, custom ambient lighting and specially designed window louvers were developed to control the light levels in the space.







The project scope for The Boston Consulting Group's Global Services Business Unit Headquarters in downtown Boston included offices, labs and meeting rooms for corporate finance, legal, information technology, worldwide training, human resources, and corporate administrative functions. A radical "activity settings" approach with a high ratio of shared open and closed group workspaces was used. All office workspaces were built using the new Steelcase Pathways system.

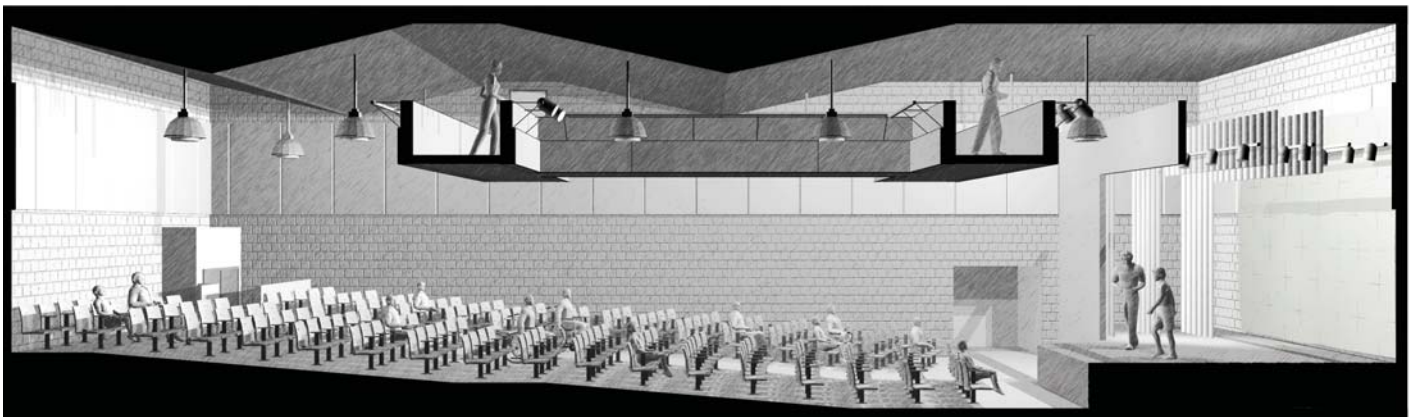
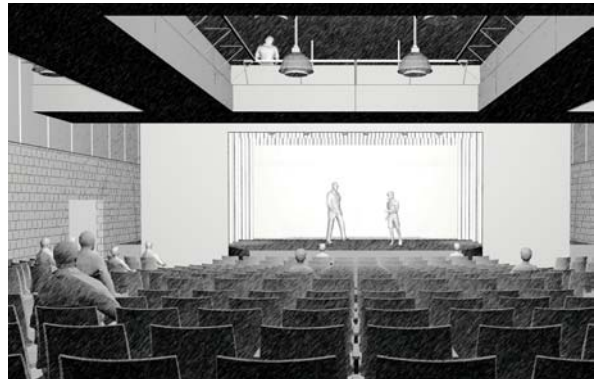
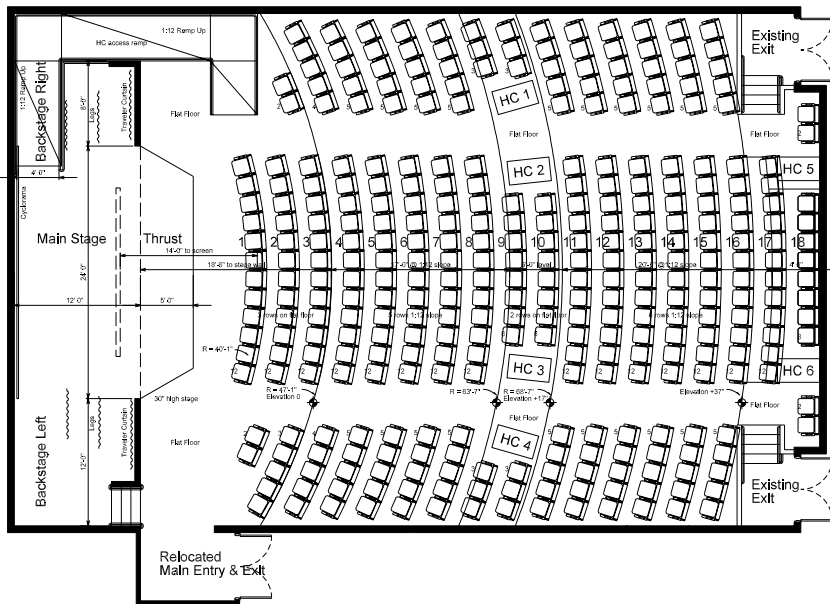




A true "multi-setting" environment of dedicated or shared spaces allocated in differentiated team neighborhoods

## A feasibility study to help fit out an Assembly Hall

A Boston area YMCA wanted to prepare a feasibility study for the fit-out of a performing arts hall. The renovation included acoustical design, audio visual facilities, lighting and a new performance area. A new sloped floor and seating pattern was introduced to optimize lines-of-sight.

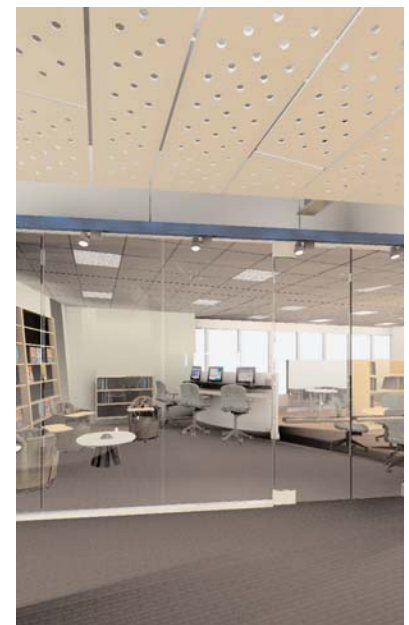






## A high profile headquarters center for bringing together Fidelity's diverse teams and core IT internal functions

FCAT was created to provide a high profile headquarters center for bringing together diverse teams and core IT internal functions such as for Technology R&D, Applications Development, Human Interface Design, Research Services, Data Base Engineering and Competitive Analysis. Specific function spaces like open labs and exhibits punctuate a public zone for visitors that is articulated by a special ceiling and wall treatment. Behind a secure wall, the FCAT business units are organized into team based clusters of multi-setting workspaces.





## Planning and interior design of a new 300,000 square foot R&D center

RL Interior Design planned and designed the interior for the new 300,000 square foot Corporate Research and Development Center based on frequent redeployment of team-based work. The Burlington project was the first major application of the new Pathways micro-architecture system from Steelcase Inc. These partial and full-height individual and group workspaces spaces were assembled into team neighborhoods that could be reconfigured to easily accommodate team reallocation. A major network Network operations Operations center Center for the real time management of GTE Internetworking constituted the center-piece of the project.



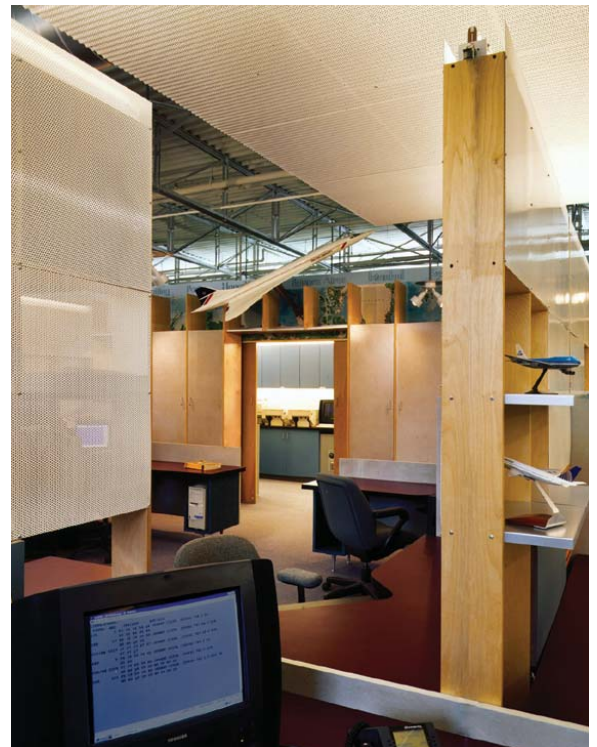
Partial Level One Plan Showing Team  
Layouts and Group Work Areas





## An automobile repair garage transformed into a travel agency with inexpensive custom partitions, lighting and furniture

A lofty 20,000 square foot warehouse was converted into office space for a travel agency. Smaller, localized ceilings were hung over the workstations to introduce a sense of intimacy to the larger room. A custom modular system of worktops, adjustable shelving and storage units created the kit of parts for the workstations. A giant storage wall organizes the space as a central unifying element.





Fidelity Investments, FMRCo World Headquarters  
Boston, Massachusetts 1997



## New office design for 250,000 square feet of space for the Fidelity Management and Research Company

Twelve floors of a downtown Boston office tower were converted into office facilities that comprised over 250,000 square feet of space, for the Fidelity Management and Research Company, Fidelity's primary headquarters fund management and research group. Technology/ Conference areas called "Info Pods" were interspersed throughout the space to encourage important group work and instant market data services information retrieval. Specialty spaces include a technical research "Chart Room" and an entire floor reserved for a Conference Area where representatives of companies come to meet with the Portfolio Managers.





## Custom designed low cost partitions, wire management, and lighting wrapped around used furniture

The Travel Collaborative, a travel agency with eighteen owners and nine employees, operates as teams of agents who work together yet function as individual businesses. The design sought to celebrate the collective nature of the work process while providing optimum acoustical privacy, wire management and lighting for this computer intensive group. Using off-the-shelf solutions, the design dispenses with conventional interior fit-out methods in favor of a more flexible and economical approach.

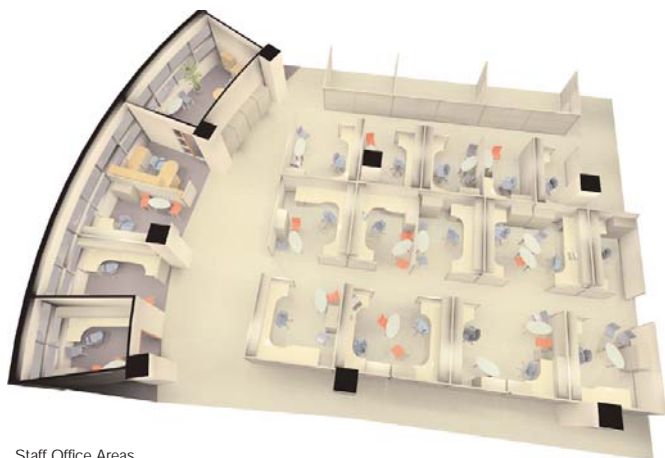






## Interior design, systems furniture planning and specification for international headquarters

As subconsultants to the building Architects, Cambridge Seven Associates, Robert Luchetti Associates was retained to provide interior design and systems furniture planning and specification for the international headquarters of the Kuwait National Petroleum Company. The building will house approximately 1000 headquarters staff.



Staff Office Areas





## Studio offices designed around the need for the frequent reconfiguration of employees into different project teams

The offices of this multi-disciplinary design and business-consulting firm were designed around the need for the frequent reconfiguration of employees into different project teams. Overhead "utility viaducts" organize the space into discrete zones and provides fixed locations for utility access. Individual and team settings can be reconfigured under these "utility viaducts" and can be plugged into various different locations to create flexible uses of the space. Exposed concrete columns and ceilings anchor the work areas in a loft like industrial space.







## World headquarters for international business consultants in renovated loft space at the Boston Design Center

The world headquarters for the international business consultants and future forecasters provides individual home bases adjacent to shared open team areas for working together. The design takes advantage of the lofty ceilings by defining the acoustically private rooms available for any employee with full height glass and aluminum storefronts comprised of sliding glass doors and rear-illuminated panels. The new design uses an extensive space-defining network of power, data, and indirect ambient uplighting.





## Multi-use lecture hall and performing arts auditorium and library

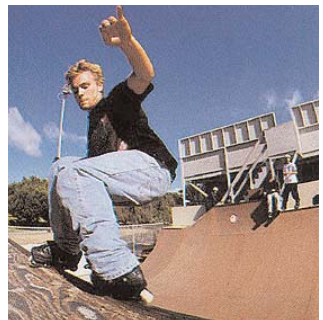
An auditorium and classrooms of a former elementary school were converted into a multi-use lecture hall, performing arts auditorium and library for this worldwide organization that supports natural science and cultural research projects. The space functions as a motion picture theatre as well with new seating and projection rooms. New acoustical treatment, theatrical lighting, stage curtains, and rigging for the existing stage theatre were installed to provide for live performances. New serving equipment allows for its use as a dining facility.





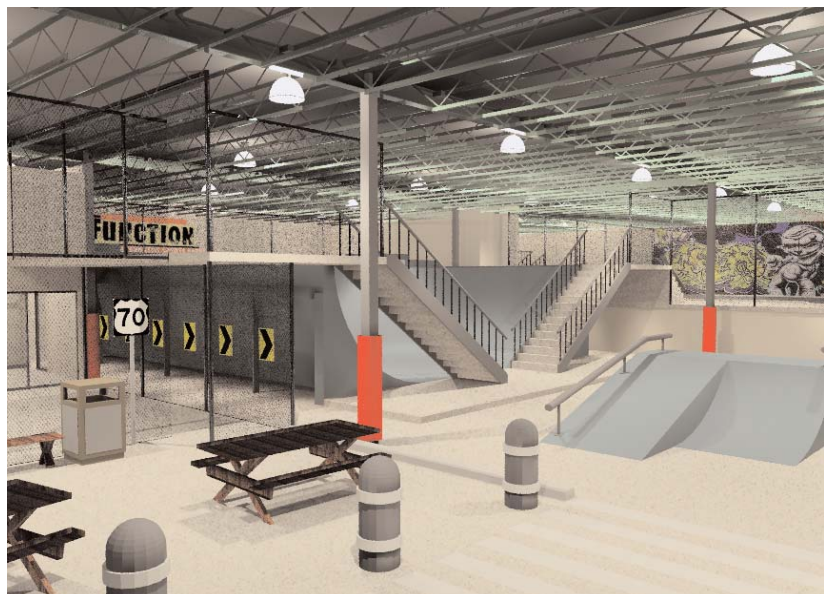
## Function Sports

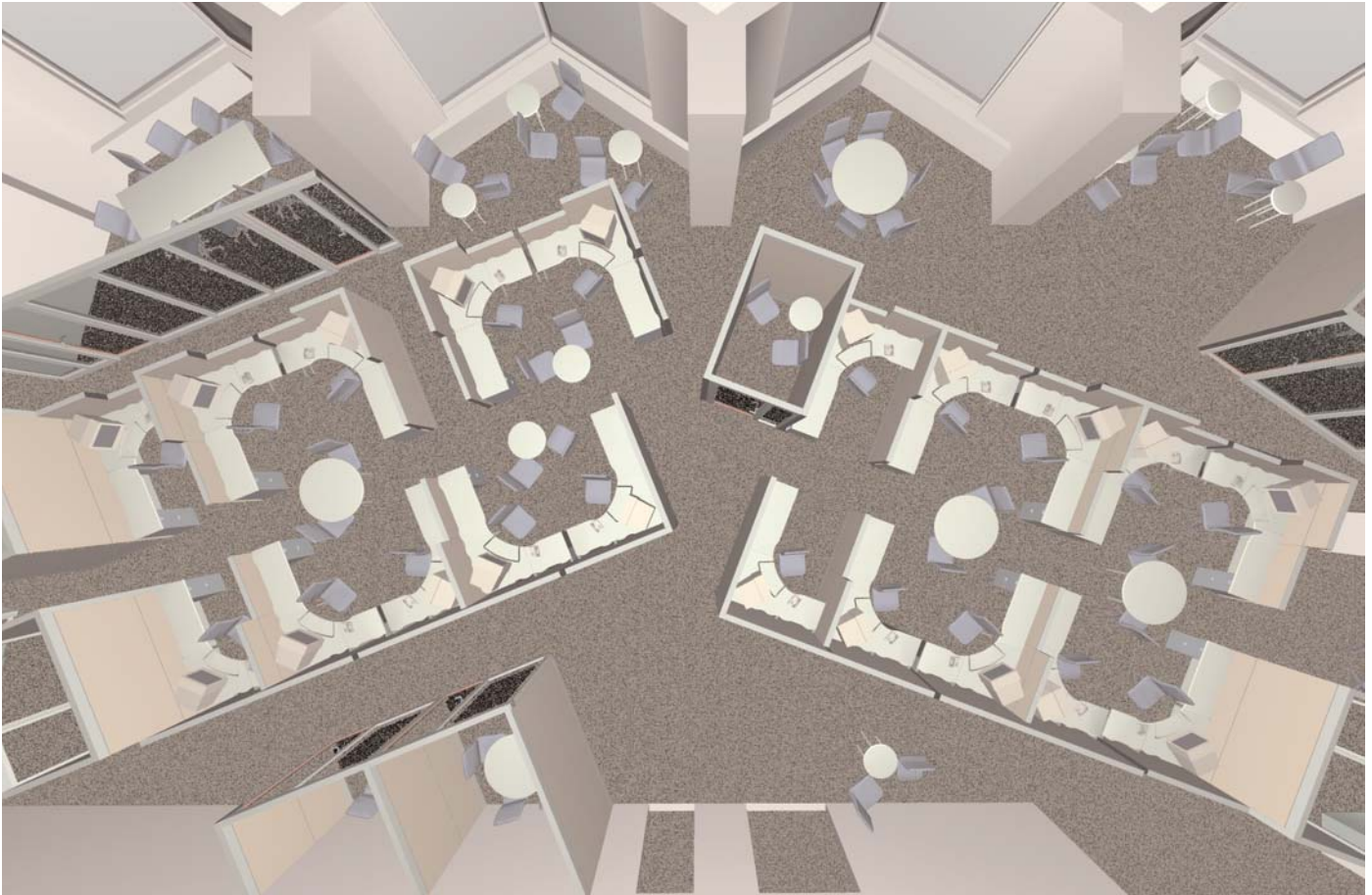
Cambridge, Massachusetts 2000



## Indoor sports facility designed to be built across the country for skateboarding, inline skating and BMX biking

Function Sports is a prototype facility for indoor skateboarding, inline skating and BMX biking designed to be built across the country. Consisting of activity space, concession stands and retail shops, the facility combines music, graphics and sports to create an environment appealing to kids. Ramp design standards were comprehensively researched and the renowned ramp designer Tim Payne was consulted on ramp and bowl configurations.





## Unique team-based neighborhoods differentiated by global finance market sector

This design customized an office plan for the team-based work process of the Global Project Finance Group. A unique sense of identity was created in the individual spaces designated for each of the four teams that are based on Market sectors. Between these group spaces were settings that were shared and by any group. Bay windows that had originally been intended for oversized managers' offices were transformed into team spaces for various functions.







## General Cinema

Prototypes throughout the United States 1987-1997



Design guidelines and prototypes used in over 300 hundred new and renovated movie theatres



Robert Luchetti Associates served as the lead design architect for General Cinema for over 200 new buildings and renovation projects. The designs focused on improvements in patron experience and concession retailing. The sequence from the patron's car to their seat was carefully orchestrated to create a completely theatrical experience to immerse the patron in the aura of the film. The illumination of the buildings established a strong, entertaining theatrical presence on the exterior, while light levels inside were carefully controlled to become dimmer as one approached one's seat. Several innovations that were introduced by RLA have become standard in cinema design- among them an ergonomic approach to Concession design and the use of Title Art.